



OneTouch

## Installation Guide



**24/7 Customer Support**



support@techmatte.com

[www.techmatte.com](http://www.techmatte.com)

STAY CONNECTED



@TechMatte



@TechMatte



/TechMatte



@tech.matte

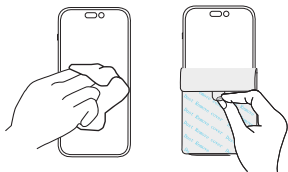
Scan Me



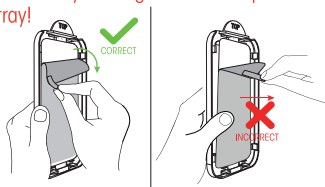
or visit

[www.TechMatte.com/install/OT3](http://www.TechMatte.com/install/OT3)

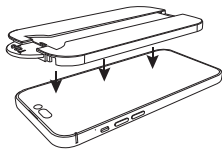
- 1** Begin by cleaning the screen with the wet wipes and the microfiber cleaning cloth. Remove any remaining dust with the dust removal cover.



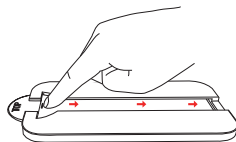
- 2** Pull the tab downwards to remove the mask film.  
**Note: Pulling downwards is important. Pulling outwards may dislodge the screen protector from the tray!**



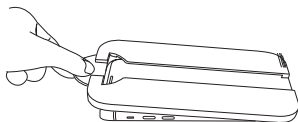
- 3** Place the application tray over your phone screen, ensuring that the top of the tray aligns with the top of the phone.



- 4** Press the screen protector at the top and slide it slowly over the open cut. The screen protector will attach, and the adhesive will spread automatically.



- 5** Remove the application tray from the phone by lifting the plastic tab at the top of the tray. The blue film will come off with the tray.



- 6** To get rid of any bubbles, carefully lift the corner nearest to the affected area. If needed, use the squeegee to secure the edges. (remove the halo on the edges if there is any)

