



**24/7 Customer Support**



[support@techmatte.com](mailto:support@techmatte.com)

[www.techmatte.com](http://www.techmatte.com)

STAY CONNECTED



@TechMatte



@TechMatte



/TechMatte



@tech.matte



OneTouch

**MAGNETIC**

Installation Guide

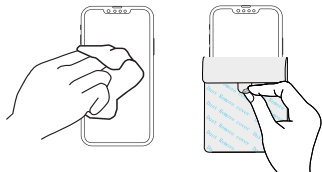
Scan Me



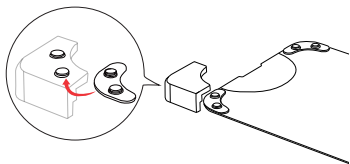
or visit

[www.TechMatte.com/install/OTM](http://www.TechMatte.com/install/OTM)

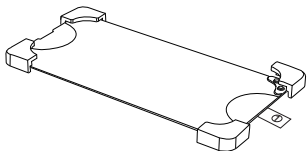
- 1** Start by cleaning the screen thoroughly using the provided wet wipes and microfiber cleaning cloth. Make sure to remove any dust or debris with the dust removal cover.



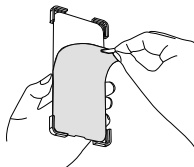
- 2** Attach a magnetic applicator to the metal plate on screen protector by aligning the two bumps on the metal plate with indented holes on the applicator.



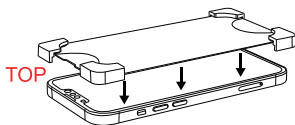
- 3** Repeat step 2 for all four corners, attaching a magnetic applicator to each metal plate.



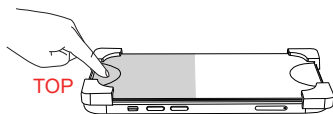
- 4** Carefully peel off the protective mask film from the screen protector using Tab 1.



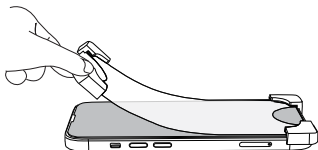
- 5** Position the screen protector over your phone screen, ensuring that the top of the screen protector is aligned with the top of the phone.



- 6** Gently press down on the TOP of the screen protector and hold for 5 seconds. The adhesive will automatically begin to spread across 1/3-1/2 of the screen.



- 7** Once the adhesive has stopped spreading, carefully peel off the blue mask film using one of the applicators from the bottom corner to complete the installation.



- 8** Detach the magnetic applicators from the metal plates and store them for future use.

