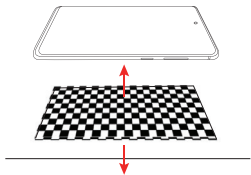


- 1** Place the mounting pad on a sturdy surface, and place your phone on top of it. This will help keep the phone in place during installation.

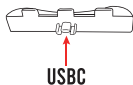


- 2** Begin by cleaning the screen with the Wet/Dry Wipes and the Dust Removal Stickers.

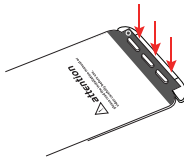
*\*Please watch the installation video carefully before installing the screen protector.*



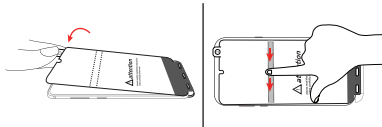
- 3** Fully insert the alignment tool into your phone's USB-C port, making sure it is flush against the bottom of your phone.



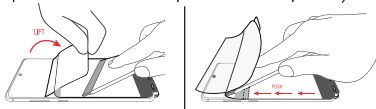
- 4** Place the three hole punch part of the screen protector onto the pegs of the alignment tool. Please make sure that the Tab 2 film, which has the text printed on it is face up.



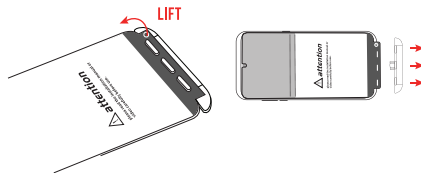
- 5** Carefully align the protector to your phone's screen, and once in place, swipe on the middle adhesive strip.



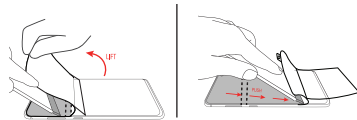
- 6** Lift the loose end with tab 2, starting from the middle of the protector at the adhesive strip. Use the squeegee to push the tab 2 film out from underneath (effectively rolling and adhering the top half of the screen protector into place.)



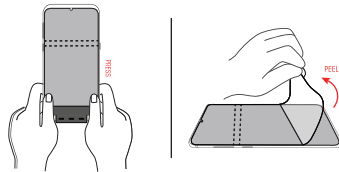
- 7** Lift the perforated tab off the pegs of the Alignment Tool and remove the tool from the phone's USB-C port.



- 8** Repeat Step 6 for the bottom half of the screen protector.



- 9** Push with thumbs along the protector to seal it in place and remove the top mask film.



## Damaged or Arrived Broken?

Try our 1-Click Warranty Claim

Go to [TechMatte.com/WarrantyClaim](https://TechMatte.com/WarrantyClaim)

OR

Scan the QR Code Below.



## Want More Coverage?

Unlock our Lifetime Warranty

Go to [TechMatte.com/Register](https://TechMatte.com/Register)

OR



**24/7 Customer Support**



[support@techmatte.com](mailto:support@techmatte.com)

[www.techmatte.com](https://www.techmatte.com)

STAY CONNECTED



@TechMatte



@TechMatte



/TechMatte



## Installation Guide

Scan Me



or visit

[www.TechMatte.com/install/EL2](https://www.TechMatte.com/install/EL2)